

WAVELENGTH



MODULAR ACOUSTIC FLOORING

TAJ FLOORING
GLOBAL MANUFACTURING, LOCAL SERVICING



For a seamless mix and match look, Wavelength wood design, Sharkskin, pairs with a coordinating tile design from the Color Infused Modular Acoustic Flooring collection.

TAJ-6516D Sharkskin | 7" x 48"
TAJ-6531C Batten Ice | 12" x 24"

WAVELENGTH

MODULAR ACOUSTIC FLOORING 5MM LVT

VOLUME 2

The Wavelength Modular Acoustic Flooring collection features 5mm luxury vinyl acoustic solutions for commercial interior spaces. From contemporary wood looks to linear abstract and linen-like textural designs, Wavelength modular plank and tile options offer sound absorption benefits, a non-slip loose lay backing, and the durability and performance of fiberglass reinforced vinyl.



Underfoot
Comfort



Access Floor



57dB
Sound
Absorption



No Need for
Acoustic
Underlayment



Easy Care



TAJ-6514D Zephyr | 7" x 48"



TAJ-6515D Silver Streak | 7" x 48"



TAJ-6522C Flannel | 12" x 24"



TAJ-6518C Mustin | 12" x 24"



TAJ-6519C Hopsack | 12" x 24"

A modern approach to flooring design, Wavelength's linear design is a directional pattern with metallic inflections inspiring subtle movement throughout a space.



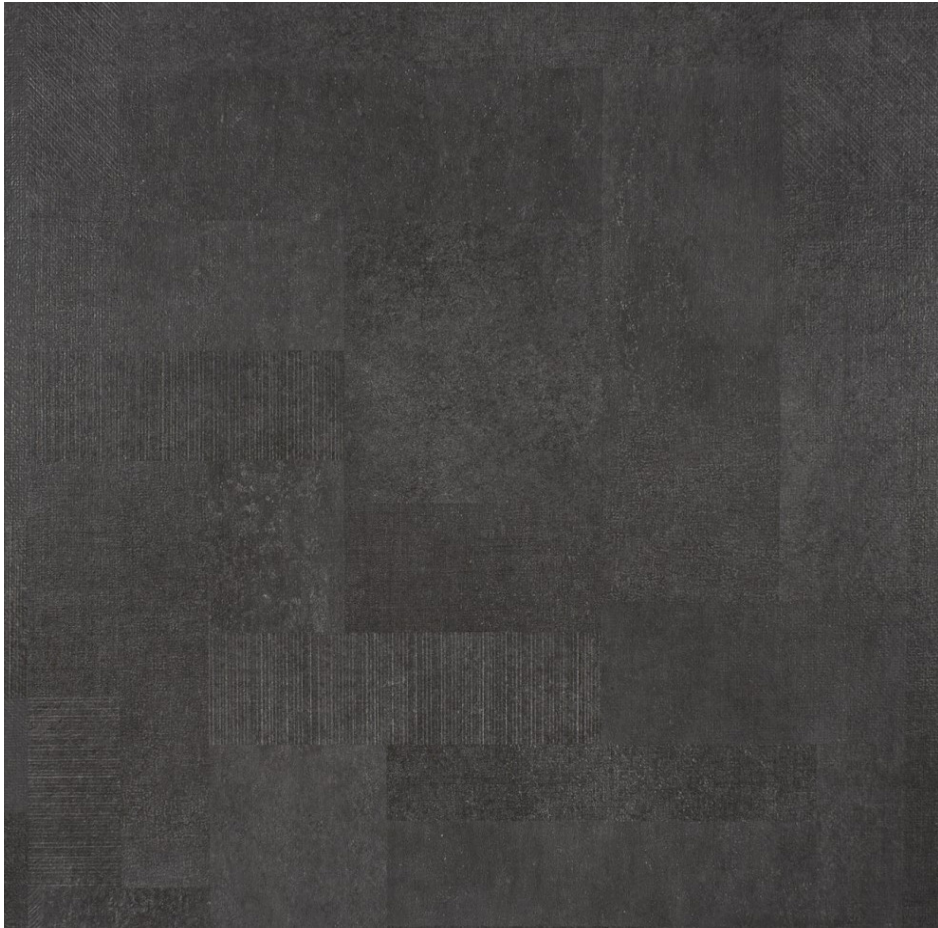
MONTAGE

Inspired by interwoven layers, Montage is a unique arrangement of elements forming a continuous design. Available as a large-format tile, its neutral tones yet intricate and collective visual of stone, concrete and textile provides interiors with a soft and sophisticated canvas.

Swatch images are representative to one singular tile, 36" x 36".



TAJ-6571N Cameo | 36" x 36"



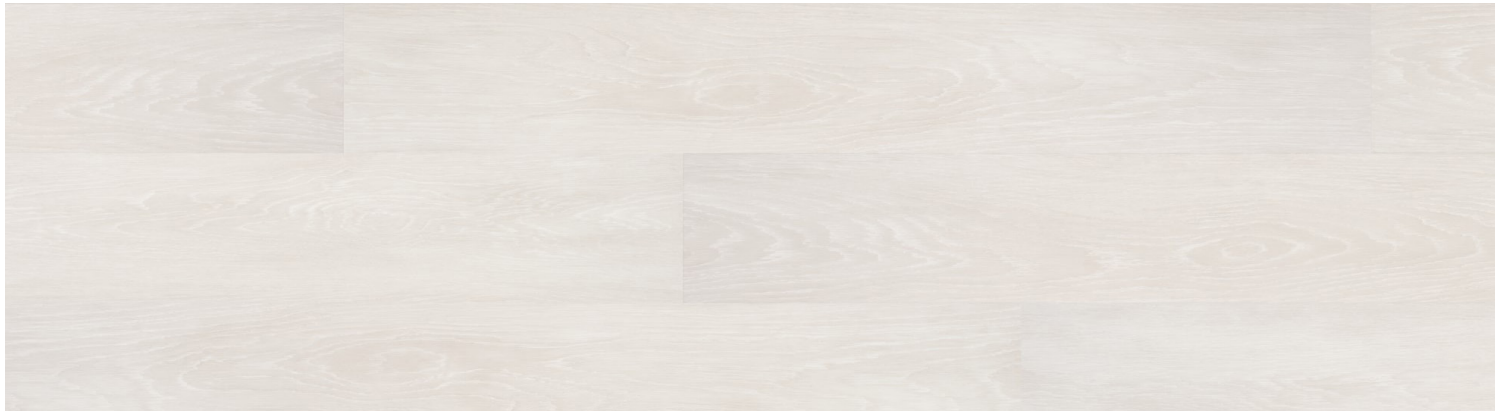
TAJ-6572N Ore | 36" x 36"



TAJ-6570N Shadow | 36" x 36"



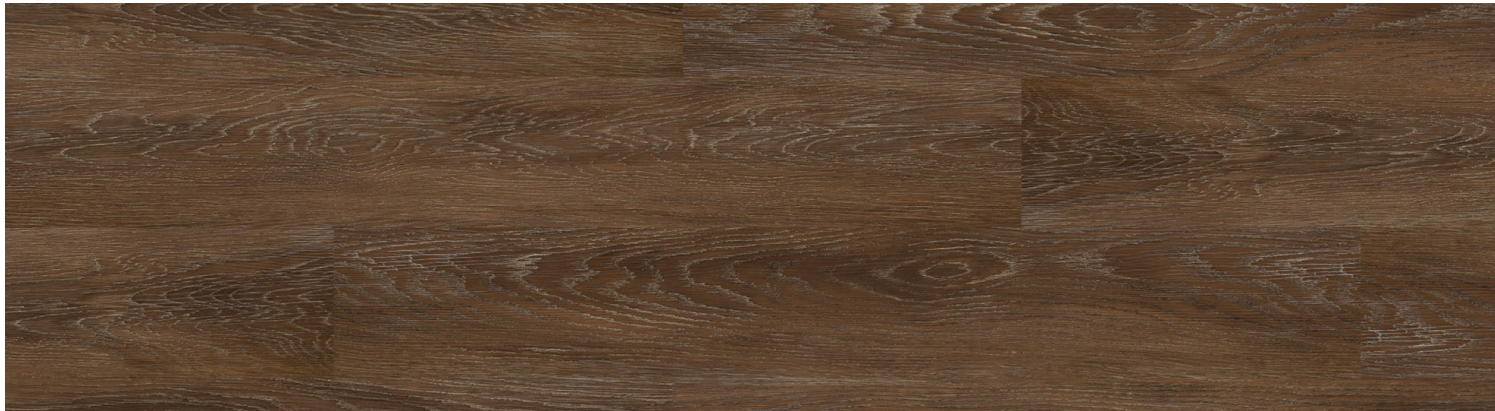
From multi-family interiors to hospitality and healthcare environments, a home-like aesthetic is ideal for creating a place of comfort. Wavelength luxury vinyl wood designs offer various options of natural detail from graining and visual textures to color tones, creating a balanced look of style and being lived in.



TAJ-6524D Shabby Chic | 7" x 48"



TAJ-6516D Sharkskin | 7" x 48"



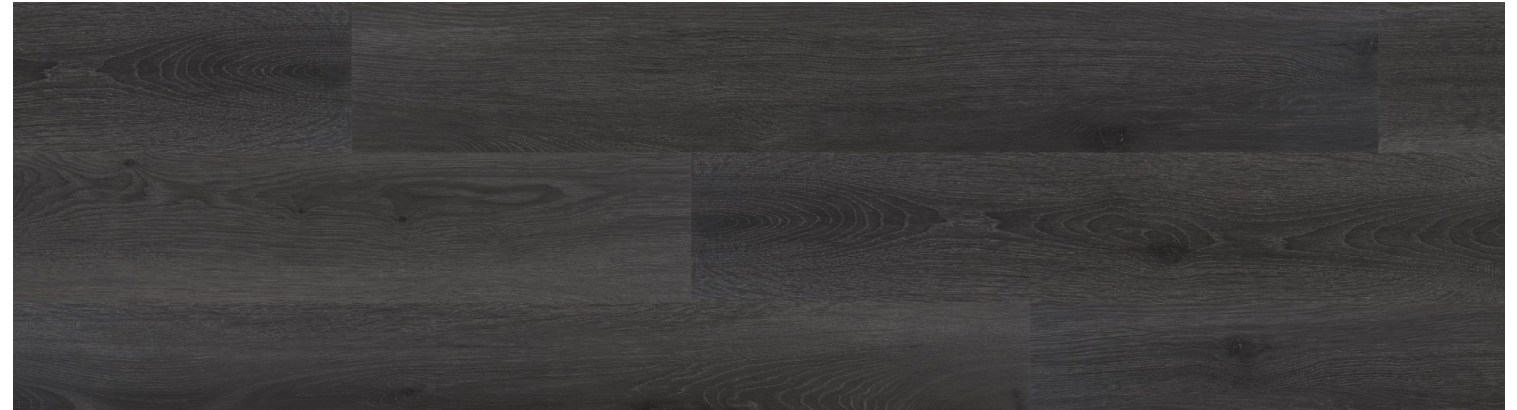
TAJ-6517D Sable | 7" x 48"



TAJ-6512D Argent | 7" x 48"



TAJ-6513D Smoke | 7" x 48"



TAJ-6523D Cinder | 7" x 48"



TAJ-6525D Chia | 7" x 48"



TAJ-6526D Buckwheat | 7" x 48"

Available in nine colors, including TAJ-6527D Oat as featured in the previous multi-family room scene.





TAJ-2801C Pearl | 12" x 24"



TAJ-2801C Pearl | 12" x 24"



TAJ-6521C Fawn | 12" x 24"

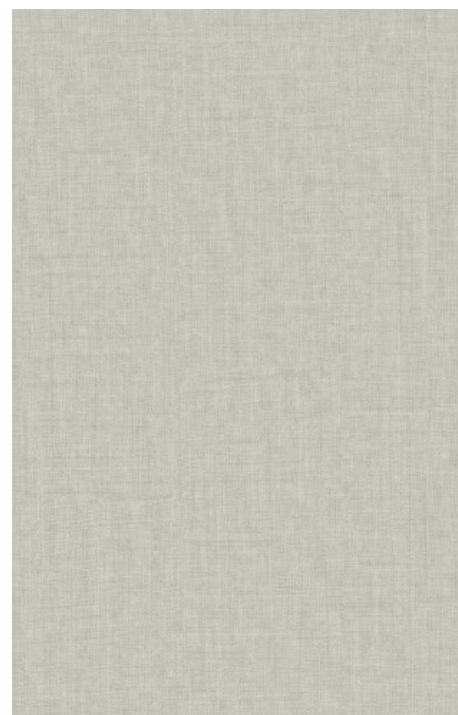


TAJ-6520C Storm | 12" x 24"

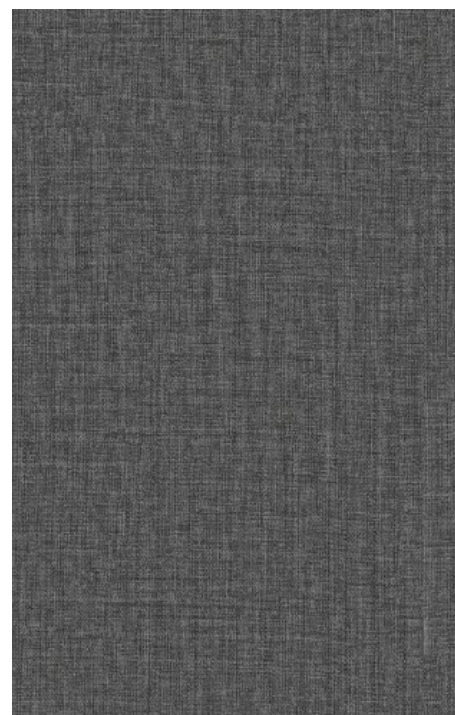
A traditional flooring material embracing contemporary elements, the Wavelength luxury vinyl stone design is a natural look for commercial interiors. Modest accents of metallics throughout these neutral tones provides spaces with a modernized approach to a classic element of design.



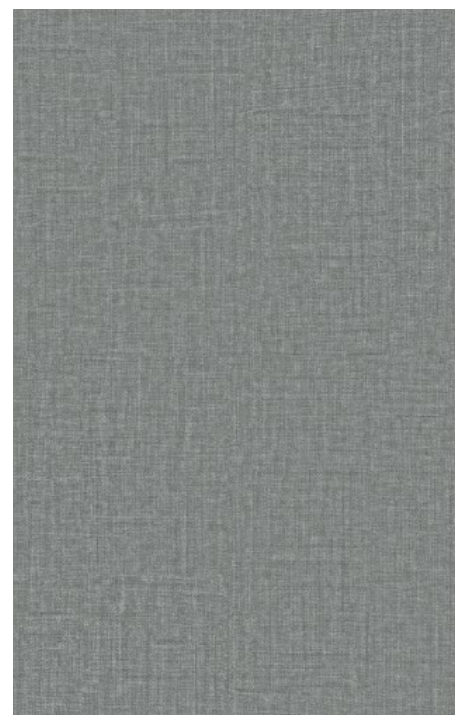
TAJ-6564C Denim | 12" x 24"



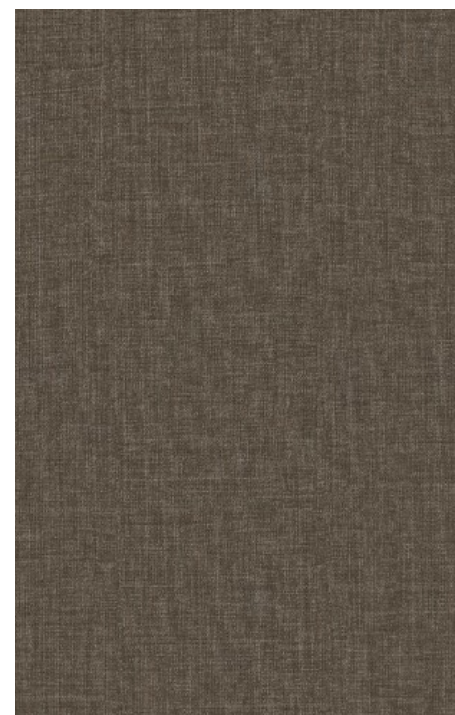
TAJ-6560C Gauze | 12" x 24"



TAJ-6561C Ripstop | 12" x 24"



TAJ-6562C Duck | 12" x 24"



TAJ-6563C Burlap | 12" x 24"



TAJ-6564C Denim | 12" x 24"

FILO

Filo, or thread, is a design representative of its meaning. This intricate crosshatch design embodies a textile aesthetic with the durability and cleanability of luxury vinyl ideal for an array of commercial end use applications.

WAVELENGTH

For additional 5mm modular acoustic flooring options, view our **Color Infused Modular Acoustic Flooring** collection.

Technical Specification Information

Wavelength Modular Acoustic Flooring is a high performance 5mm fiberglass reinforced modular acoustic flooring product with a non-slip backing. This advanced modular construction allows for multiple installation options in varied commercial end use applications. Wavelength is appropriate for use over raised access floor panels, excellent for limiting sound transmission, and installs next to carpet tile without the need for transition strips.

Classification: ASTM F1700 Class III, Type A (Smooth)
Type B (Embossed)

Overall Thickness: 5.0mm

Dimensions:

Plank 7" x 48" nominal (7.0" x 48.0" actual)

Slab 12" x 24" nominal (12.0" x 24.0" actual)

Tile 36" X 36" nominal (36.0" x 36.0" actual)

Wear Layer Thickness: 0.5mm, 20mil

Wear Layer: High Molecular Weight Polymerized Vinyl

Finish: Protech Plus (Ceramic Bead Infused UV Cured Polyurethane with NanoSilver anti-microbial technology)

Edge Detail: Square Edge (no bevel)

Warranty: 20 Year Commercial Warranty

Maintenance: Requires no wax, no stripping, no buffing or the use of toxic chemicals

Static Load Limit: ASTM F970 modified, passes at 1,000 psi, residual compression maximum 0.005"

Chemical and Stain Resistance: ASTM F925, No surface dulling, surface attack or color change with 5% acetic acid, 70% isopropyl alcohol, mineral spirits, 5% sodium hydroxide, 5% hydrochloric acid, 5% ammonia, bleach, 5% phenol, gasoline, sulfuric acid, kerosene, and olive oil.

Slip Resistance: ASTM C1028-89, >0.6

Flame Spread: ASTM E648, >.45, Class 1

Smoke Density: ASTM E662, <450

Low Emitting Flooring: LEED IEQ4.3

Low Emitting Adhesives: LEED IEQ4.1

Recycled Content: Post Consumer and Post Industrial Recycled Content Present*

Impact Sound Conduction: ASTM E492, IIC 57

Airborne Sound Transmission Loss: ASTM E90, STC 62

Indoor Air Quality: CHPS 1350 Certified

Indoor Air Quality: FloorScore Certified

Plant Certifications: ISO14001, ISO9001

Trade Agreements Act (TAA) Compliant



Revit files available for download at tajflooring.com.

*For detail on Health and Environmental Product Declarations and recycled content, please email request to info@tajflooring.com.

Visit us at tajflooring.com for complete specifications and to order samples.



740 Church Road, Elgin, IL 60123
(888) 652-2111 | tajflooring.com