

# WAVELENGTH

VOLUME 3

**TAJ** FLOORING  
GLOBAL MANUFACTURING, LOCAL SERVICING

FEATURED PRODUCT / TAJ-6512D ARGENT

**MODULAR ACOUSTIC  
FLOORING**

5MM LVT

PLANK & TILE

FOR RAISED ACCESS USE

**COMMERCIAL FLOORING**



TAJ-6573D SESAME


## WAVELENGTH MODULAR ACOUSTIC FLOORING


The Wavelength Modular Acoustic Flooring collection harmonizes performance and design through a modern interpretation of texture, tone, and sound. Crafted as a 5mm luxury vinyl acoustic solution, Wavelength transforms commercial interiors with a balance of aesthetic warmth and technical precision.


Each design, ranging from expressive wood visuals to soft textile-inspired textures, creates an atmosphere that feels both grounded and dynamic. The collection's fiberglass-reinforced construction delivers dimensional stability and long-term durability, while its acoustic backing absorbs sound and enhances comfort underfoot.


With a palette that transitions seamlessly across spaces, Wavelength offers the flexibility and refinement needed for today's adaptive environments—from hospitality and healthcare to corporate and multi-family interiors.


FEATURES & BENEFITS


  
commercial warranty

  
sound absorption

  
raised access

  
comfort & safety

  
easy care

  
protech+ wear layer finish



TAJ-6524D SHABBY CHIC



# WOOD

SIZE: 7" x 48" PLANKS

Rooted in authenticity and designed for comfort, the Wavelength wood visuals evoke the essence of natural craftsmanship with a contemporary sensibility. Each 5mm modular plank captures the organic depth of woodgrain—subtle variations, tactile textures, and nuanced hues that bring a sense of warmth and familiarity to commercial interiors.



TAJ-6573D Sesame



TAJ-6574D Cashew



TAJ-6525D Chia



TAJ-6526D Buckwheat



TAJ-6527D Oat



TAJ-6575D Turbinado



TAJ-6576D Molasses



TAJ-6524D Shabby Chic



TAJ-6516D Sharkskin



TAJ-6512D Argent



TAJ-6517D Sable



TAJ-6523D Cinder



TAJ-6513D Smoke



# TRAVERTINE

A traditional flooring material that incorporates contemporary elements, Travertine offers a natural look for commercial interiors. Modest accents of metallics throughout these neutral tones add a modern touch to a classic design element.

SIZE: 12" x 24" TILES



TAJ-2801C Pearl



TAJ-6521C Fawn



TAJ-6520C Storm



TAJ-6521C FAWN

# FILO

Filo, meaning "thread," is a design representative of its name. This intricate crosshatch design embodies a textile aesthetic with the durability and cleanability of luxury vinyl, making it ideal for a wide range of commercial end-use applications.

SIZE: 12 x 24" TILES



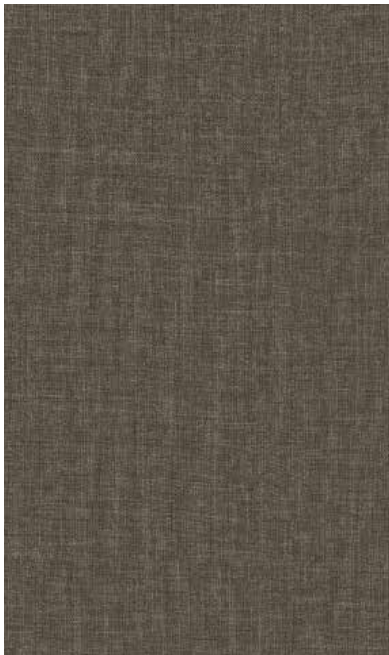
TAJ-6560C Gauze



TAJ-6561C Ripstop



TAJ-6562C Duck



TAJ-6563C Burlap



TAJ-6564C Denim



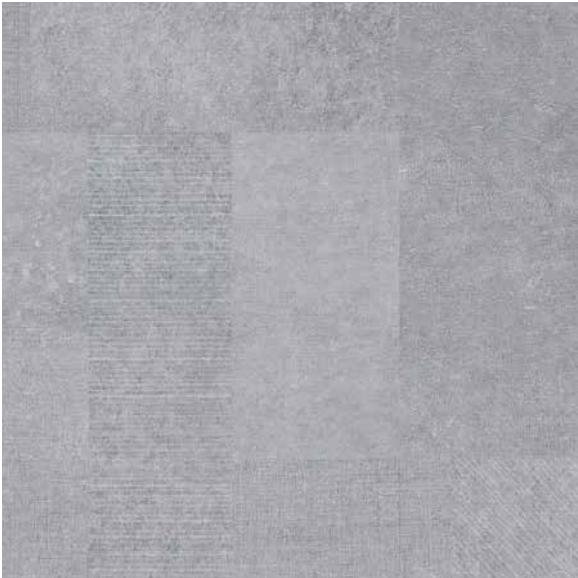
RANDOM PATTERN:  
TAJ-6560C GAUZE  
TAJ-6561C RIPSTOP  
TAJ-65562C DUCK



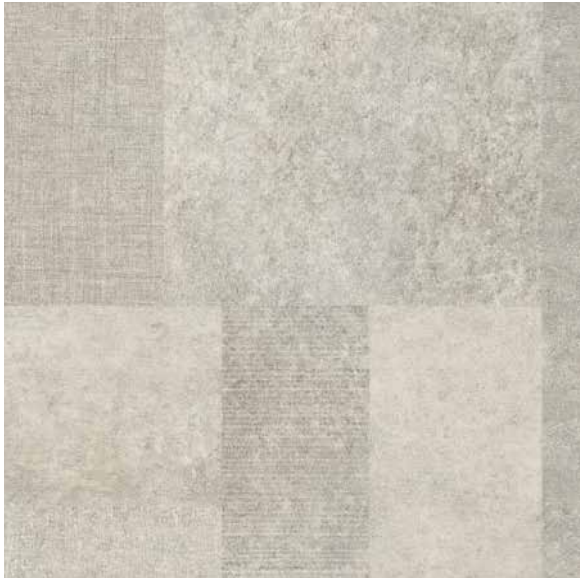
# MONTAGE

Inspired by interwoven layers, Montage is a distinctive arrangement of elements that forms a continuous design. Available as a large-format tile, its neutral tones, yet intricate and collective visual of stone, concrete, and textile, provide interiors with a soft and sophisticated canvas.

SIZE: 36" x 36" TILES



TAJ-6570N Shadow



TAJ-6571N Cameo



TAJ-6572N Ore



TAJ-6571N CAMEO



TAJ-6570N SHADOW

# TECHNICAL DATA

**Wavelength Modular Acoustic Flooring** is a high-performance 5mm fiberglass-reinforced modular acoustic flooring product with a non-slip backing. This advanced modular construction enables multiple installation options for varied commercial end-use applications. Wavelength is suitable for use over raised access floor panels, as it is excellent for limiting sound transmission, and can be installed next to carpet tile without the need for transition strips.

## PRODUCT DETAILS

Overall Thickness	5MM
Wear Layer Thickness	20MIL
Wear Layer & Finish	High Molecular Weight Polymerized Vinyl with Protech Plus Finish
Warranty	20 Year Commercial
Edge Detail	Square Edge (no bevel)

## ASTM TESTING RESULTS

Classification	ASTM F1700 Class III Type B (embossed)
ASTM E648 Fire Assistance	Class 1 > 0.45
ASTM E662 Smoke Density	< 450, Flaming/Non-Flaming
ASTM F970 Static Load	Passes at 1,000 psi, Residual Compression Maximum 0.005"
ASTM C1028-89 Slip Resistance	> 0.6 per ADA
ASTM F925 Chemical & Stain	Excellent; No surface dulling, surface attack, or color change with 5% acetic acid, 70% isopropyl alcohol, mineral spirits, 5% sodium hydroxide, 5% hydrochloric acid, 5% ammonia, bleach, 5% phenol, gasoline, sulfuric acid, kerosene, and olive oil.
ASTM E492 Impact Sound Conduction	IIC 57
ASTM E90 Airborne Sound Transmission Loss	STC 62
FloorScore® Certified	Yes
LEED	Low Emitting Adhesives IEQ4.1, Low Emitting Coatings IEQ4.2, Low Emitting Material
Recycled Content	Post Consumer and Post Industrial Recycled Content Present. Contact us for more information regarding recycled content and detail on Health and Environmental Product Declarations.

**Installation:** Apply with recommended adhesive referenced in the full technical specification.

**Maintenance:** Requires no wax, no stripping, no buffing or the use of toxic chemicals.

**Manufacturing Plant Certifications:** ISO 14001, ISO 9001

Trade Agreements Act (TAA) Compliant



Scan to access the full technical specification information including installation and maintenance guides.



Color and shading of product images to sample may vary. Viewing actual samples is recommended.

# MIX & MATCH COLLECTIONS

With hundreds of designs across TAJ's portfolio, the Wavelength Modular Acoustic Flooring collection can be effortlessly paired with additional 5mm modular acoustic offerings, including 2-3-5 Luxury Vinyl Plank & Tile and Color Infused Modular Acoustic Flooring. Together, these collections provide an expansive range of colors, patterns, and formats—allowing you to create cohesive transitions between spaces or mix coordinating designs for a truly distinctive visual experience.

## 2-3-5 LUXURY VINYL PLANK & TILE



Available in 2MM, 3MM and 5MM thicknesses, the **2-3-5 Luxury Vinyl Plank & Tile** collection features innovated modern visuals that embrace the elements of our natural surroundings.



## COLOR INFUSED MODULAR ACOUSTIC FLOORING



**Color Infused**, a collection of 5mm modular acoustic flooring available in three unique patterns and eight bold colorways.







TAJ-6527D OAT

