



PREMIUM LVT PLANKS & TILES

4" x 36" Plank



TAJ-312A Light Cherry | 4" x 36" Plank



TAJ-414A Warm Cherry | 4" x 36" Plank



TAJ-433A Split Hickory | 4" x 36" Plank



TAJ-316A American Cherry | 4" x 36" Plank



TAJ-434A Shaved Redwood | 4" x 36" Plank



TAJ-340A Auburn Walnut | 4" x 36" Plank



TAJ-326A Chocolate Oak | 4" x 36" Plank



TAJ-339A Dark Walnut | 4" x 36" Plank



TAJ-338A Gray Ash | 4" x 36" Plank

6" x 36" Plank



TAJ-601H Chalk | 6" x 36" Plank



TAJ-607H Pale Maple | 6" x 36" Plank



TAJ-617H Fresh Maple | 6" x 36" Plank

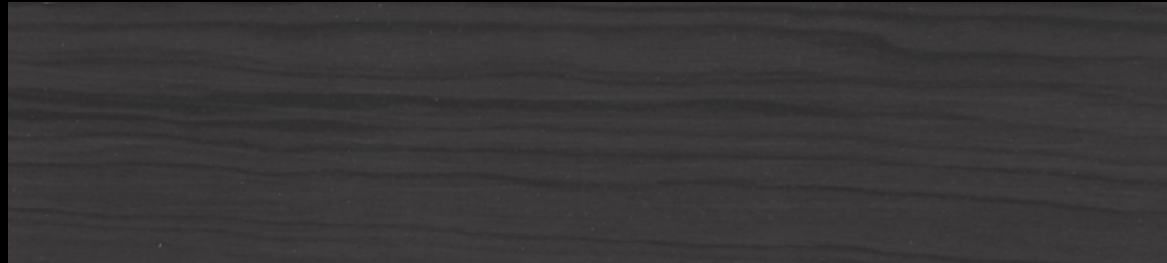


TAJ-628H Blonde | 6" x 36" Plank



TAJ-682H Mocha | 6" x 36" Plank

6" x 36" Plank



TAJ-686H Rubbed Ebony | 6" x 36" Plank

7" x 48" Plank



TAJ-799F Scraped Birch | 7" x 48" Plank

7" x 48" Plank



TAJ-703F Gray Barnwood | 7" x 48" Plank



TAJ-744F Vintage | 7" x 48" Plank



TAJ-705F Windy City | 7" x 48" Plank



TAJ-702F Canoe | 7" x 48" Plank



TAJ-707F Barred Wood | 7" x 48" Plank



TAJ-792F Variable Oak | 7" x 48" Plank



TAJ-708F Cabin | 7" x 48" Plank

7" x 48" Plank



TAJ-700F Scops Wood | 7" x 48" Plank



TAJ-701F Borial Wood | 7" x 48" Plank



TAJ-704F Mile High | 7" x 48" Plank



TAJ-706F Big Apple | 7" x 48" Plank



TAJ-709F Espresso | 7" x 48" Plank

17.72" x 35.43" Slab



TAJ-501G Oil Stained | 17.72" x 35.43" Slab



TAJ-502G Rust Patina | 17.72" x 35.43" Slab

18" x 18" Tile



TAJ-169E Bright Metal
18" x 18" Tile



TAJ-170E Medium Metal
18" x 18" Tile

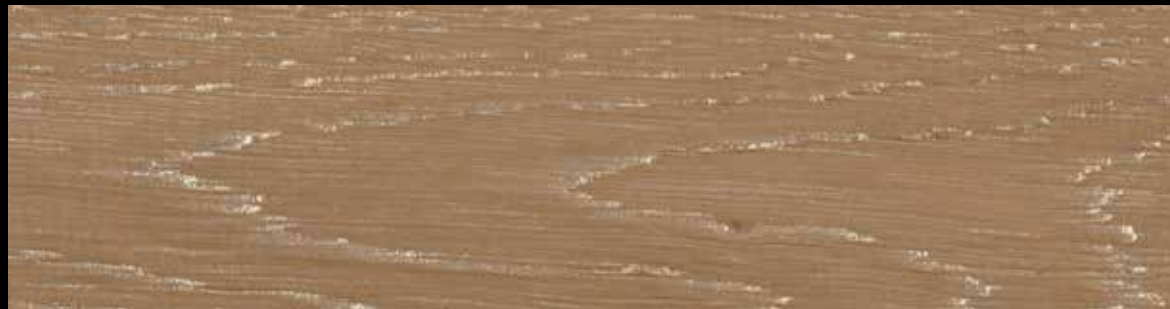


TAJ-171E Dark Metal
18" x 18" Tile

9.25" x 59.25" Plank



TAJ-901M Sawn Buckskin | 9.25" x 59.25" Plank



TAJ-908M Splake | 9.25" x 59.25" Plank



TAJ-902M Classic Oak | 9.25" x 59.25" Plank



TAJ-904M Sawn Riverwood | 9.25" x 59.25" Plank

12" x 24" Slab



TAJ-812W Tidal Wave | 12" x 24" Slab



TAJ-811W Hurricane | 12" x 24" Slab



TAJ-805W Strata Graphite | 12" x 24" Slab



TAJ-804W Strata Creme | 12" x 24" Slab

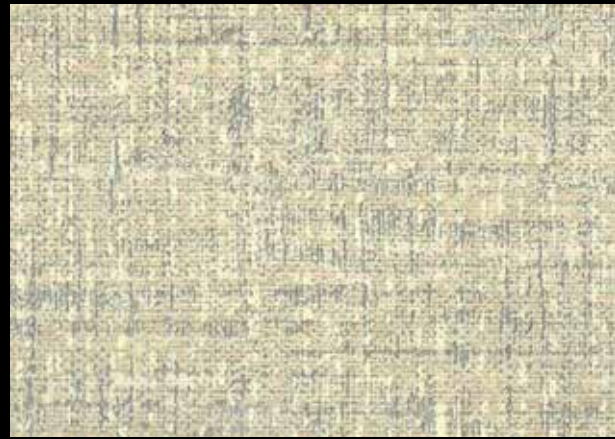


TAJ-810W Strata Earth | 12" x 24" Slab

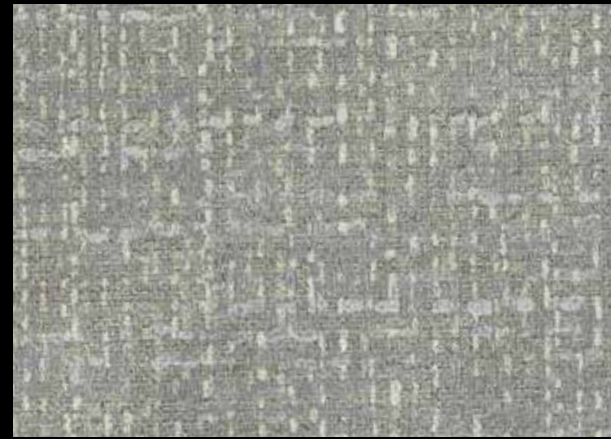


TAJ-809W Abode | 12" x 24" Slab

12" x 24" Slab



TAJ-806W Textile Ecru | 12" x 24" Slab



TAJ-803W Textile Taupe | 12" x 24" Slab



TAJ-802W Textile Umber | 12" x 24" Slab



TAJ-801W Textile Jet | 12" x 24" Slab



TAJ-808W Cottage | 12" x 24" Slab



TAJ-807W Castle | 12" x 24" Slab

9.25" x 59.25" Plank



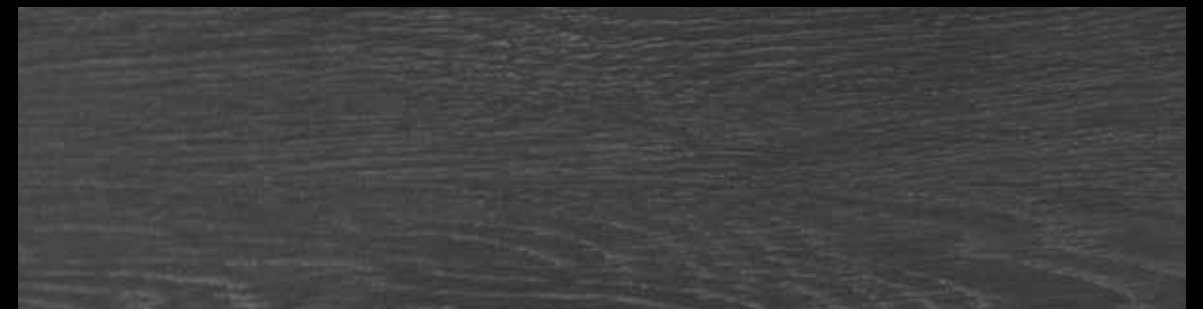
TAJ-905M Brooky | 9.25" x 59.25" Plank



TAJ-903M French Roast | 9.25" x 59.25" Plank



TAJ-907M Thunderhead | 9.25" x 59.25" Plank



TAJ-906M Sevan | 9.25" x 59.25" Plank

Technical Specification Information

Classification: ASTM F1700 Class III, Type A (Smooth) Type B (Embossed)

Overall Thickness: 3.0mm, .118", Nominal 1/8"

Dimensions:

Tile 18" x 18"
Slab 12" x 24"
Slab 17.72" x 35.43" (450mm x 900mm)
Plank 4" x 36"
Plank 6" x 36"
Plank 7" x 48"
Plank 9.25" x 59.25" (235mm x 1505mm)

Wear Layer Thickness: 0.7mm, 28mil

Wear Layer: High Molecular Weight Polymerized Vinyl

Finish: Protech Plus
Ceramic bead infused, EPA approved active anti-bacterial (non NanoSilver) UV cured urethane coating technology. Provides two times better scratch resistance than typical urethane coatings.

Edge Detail: Square Edge - No Bevel

Warranty: 20 Year Commercial Warranty

Maintenance: Requires no wax, no stripping, no buffing or the use of toxic chemicals.

Static Load Limit: ASTM F970 modified, passes at 1100psi, residual compression maximum 0.005".

Chemical and Stain Resistance: ASTM F925, Excellent
No surface dulling, surface attack or color change with 5% acetic acid, 70% isopropyl alcohol, mineral spirits, 5% sodium hydroxide, 5% hydrochloric acid, 5% ammonia, bleach, 5% phenol, gasoline, sulfuric acid, kerosene, and olive oil.

Slip Resistance: ASTM C1028-89, >0.6

Flame Spread: ASTM E648, >.45, Class 1

Smoke Density: ASTM E662, <450

Low Emitting Flooring: LEED IEQ4.3

Low Emitting Adhesives: LEED IEQ4.1

Recycled Content: Post Consumer and Post Industrial Recycled Content Present*

Environmental Product Declaration (EPD)
Available Upon Request*

Indoor Air Quality: CHPD 1350 Certified

Indoor Air Quality: FloorScore Certified

Plant Certifications: ISO14001, ISO9001

Trade Agreements Act (TAA) Compliant

*For detail on Health and Environmental Product Declarations and recycled content, please email request to info@tajflooring.com

Visit us at www.tajflooring.com for complete specifications and to order samples.



740 Church Road • Elgin, IL 60123

(888) 652-2111 • fax (847) 690-9931 • tajflooring.com

